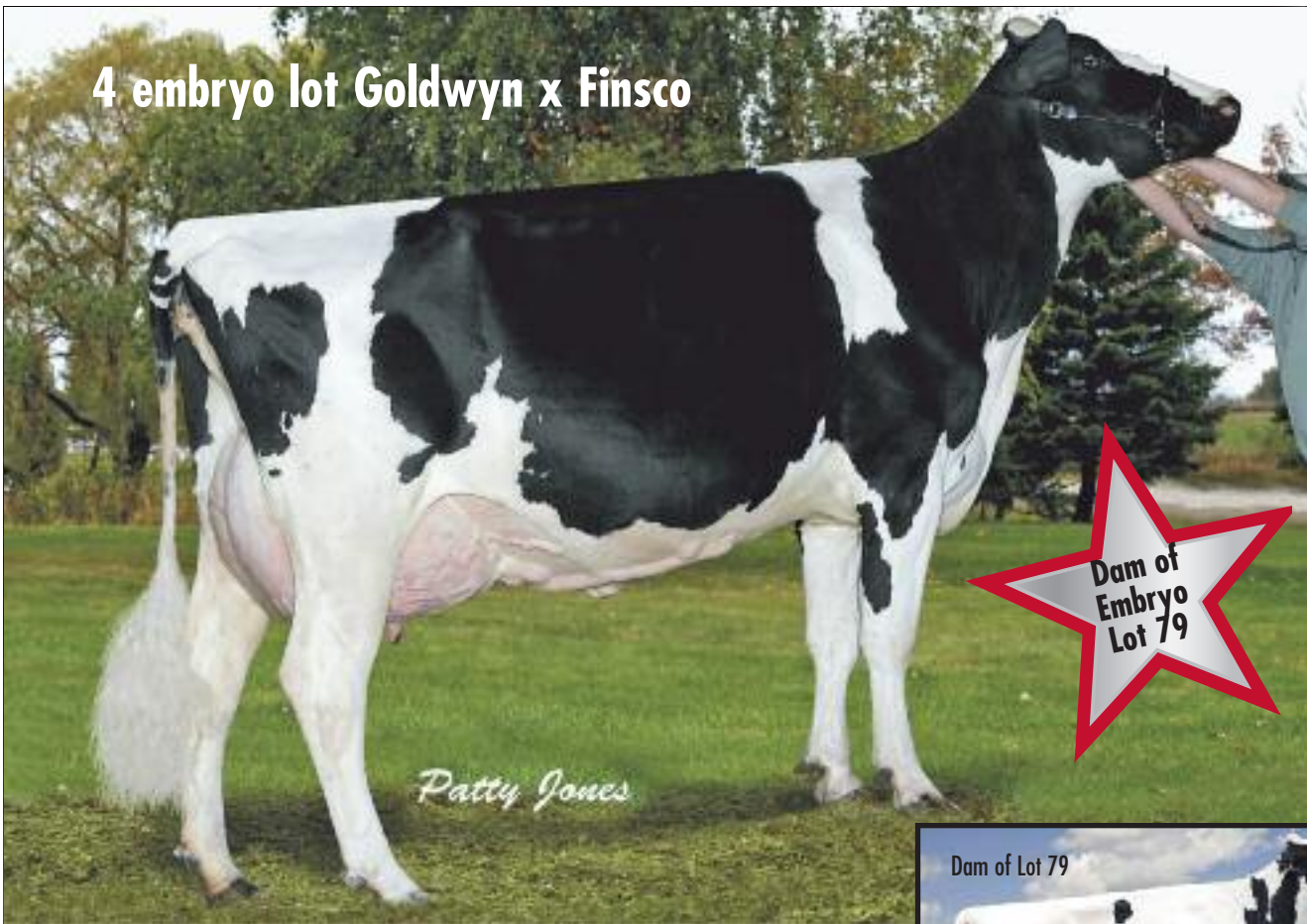


4 embryo lot Goldwyn x Finsco



Patty Jones

79

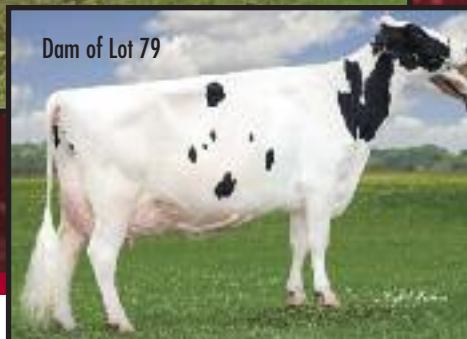
QUALITY HOLSTEINS

905-851-3892

Dam of Embryo Lot 79

Quality Gibson Finsco EX-94-2E

2nd 5-Yr-Old Autumn Opportunity & Discovery 2008



Dam of Lot 79

LOT 79

4 EMBRYO LOT GOLDWYN X FINSCO
 CAN-PA Aug*09 PA LPI+1973
 KG M+320 F+61 %F+0.48
 SCS 2.72 P+29 %P+0.17
 CAN-PA Aug*09 Conf+13
 MS+12 F&L+9 DS+10 R+9

Embryos are full siblings to
Quality Goldwyn Flansco VG-88 2Y,
Intermediate Champion Autumn Opportunity 2009

4th & 5th Maternal Dam
 A PLUSHANSKI VALIANT FRAN ET EX-90-4YR-USA 35*
 PLUSHANSKI CHIEF FAITH EX-94-4E-USA

Quality B C Frantisco EX-96 3E 11*

All-Canadian 5X in milk and twice
 Supreme Champion at RAWF

BRAEDALE GOLDWYN
 HOCANM10705608 *BLF*CVF GT
 GP-84-8YR-CAN EXTRA'05
 F&L:83 DS:84 R:87
 CAN-GEV Aug*09 99%Rel GLPI+2583/99%
 KG M+649/55% F+59/94% %F+0.34
 SCS 2.44 P+37/84% %P+0.14
 CAN-GEV Aug*09 99%Rel Conf+16/99%
 MS+16 F&L+14 DS+10 R+4
 Progeny Data: 11497 Daus: 82% GP+
 8EX 2638VG 6767GP 1956G 128F
 11136 DAUS ME AVG: 11355 444 3.9 364 3.2
 AVG BCA: M215 F227 P220

SHOREMAR JAMES
 HOCANM5902195 *BLF*CVF GT
 GP-81-2YR-CAN EXTRA'98
 CAN-GEV Aug*09 99%Rel GLPI+84/28%
 KG M-313 F+14 %F+0.25 P+15 %P+0.23
 CAN-GEV Aug*09 99%Rel Conf+4
BRAEDALE BALER TWINE
 HOCANF6860888 *BLF ETM GT
 VG-86-2YR-CAN 25*(27/100)
 02-01 305 12096 591 4.9 402 3.3
 365 14019 690 4.9 477 3.4
 BCA 299 397 314
 1 LACT: 27051 1359 5.0 1005 3.7 KG

A MARK CJ GILBROOK GRAND ET
 HOCANM393207 *BLF*MFF ET GT
 VG-86-5YR-CAN EXTRA'93
STELBRO JENINE AEROSTAR
 HOCANF5337384 *BLF GT
 VG-85-4YR-CAN
MAUGHLIN STORM
 HOCANM5457798 *BLF*CVF*BRC ET GT
 EX-CAN EXTRA'96

BRAEDALE GYPSY GRAND
 HOCANF5912235 GT
 VG-88-5YR-CAN 37*(0/185)

JUNIPER ROTATE JED-ET
 HOUSAM2040728 *BLF*CVF ET GT
 EX-96-2E-USA GM'94 EXTRA'97
ELKENDALE CLEITUS IMPALA-ET
 HOUSAF13424961 *BLF ET GT
 VG-87-3YR-CAN VG-85-2YR-USA DOM 19*(6/89)
BOULET CHARLES ET
 HOCANM395671 *BLF*CVF*BRC ET GT
 EX-CAN ST'94

QUALITY GIBSON FINSCO
 HOCANF9408176 ET GT B:2003 Apr 09
 EX-94-2E-CAN
 MS:94(FA:8 RAH:9 RAW:7) F&L:95 DS:93 R:96
 CAN-EBV Aug*09 69%Rel LPI+1362/96%
 KG M-10/36% F+62/98% %F+0.62
 SCS 3.00 P+20/76% %P+0.19
 CAN-EBV Aug*09 54%Rel Conf+10/96%
 MS+8 F&L+4 DS+10 R+13
 02-03 305 8647 398 4.6 296 3.4
 BCA 220 271 233
 03-05 305 11278 688 6.1 361 3.2
 335 12239 736 6.0 395 3.2
 BCA 235 382 234
 05-04 305 10889 528 4.8 392 3.6
 BCA 211 272 239
 4 LACT: 44420 2265 5.1 1520 3.4 KG
 AVG BCA: M218(+17) F296(+69) P231(+33)
 HM. ALL-ONTARIO 5-YR 2008
 2ND 5-YR 2008 ON DISCOVERY
 2ND 5-YR 2008 AUTUMN OPP.
 1ST JR-2-YR 2005 HALTON-PEEL
 Progeny Data: 0EX 1VG 0GP 0G 0F
 1 DAUS ME AVG: 13762 578 4.2 468 3.4
 AVG BCA: M260 F296 P283

SILKY GIBSON
 HOCANM6215479 *BLF*CVF ET GT
 EX-96-CAN ST'99
 CAN-GEV Aug*09 99%Rel GLPI+581/60%
 KG M-421 F+33 %F+0.48 P-3 %P+0.11
 CAN-GEV Aug*09 99%Rel Conf+9
QUALITY B C FRANTISCO
 HOCANF10514577 ET GT
 EX-96-3E-CAN 11*(4/53)
 03-07 305 13797 791 5.7 441 3.2
 365 15760 908 5.8 519 3.3
 BCA 292 457 294
 05-00 305 13914 715 5.1 438 3.1
 BCA 271 370 269
 5 LACT: 81017 4248 5.2 2934 3.6 KG
 AVG BCA: M238(+26) F332(+104) P258(+44)
 2 Superior Lactations
 ALL-CANADIAN MATURE COW 2005
 ALL-CANADIAN 5-YR 2004
 GRAND 2005 ROYAL
 GRAND 2004 ROYAL
 INT.CHAMP 2002 ROYAL
 HM.GRAND 2002 ROYAL
 Progeny Data: 3EX 12VG 2GP 0G 0F
 17 DAUS ME AVG: 11991 488 4.1 370 3.1
 AVG BCA: M227 F250 P224

A PLUSHANSKI FRANCISCO ET
 HOCANF4482374 ET GT
 VG-86-3YR-CAN 7*(3/41)
 05-01 305 13075 601 4.6 438 3.3
 326 13515 635 4.7 462 3.4
 BCA 225 281 241
 3 LACT: 35549 1615 4.5 1229 3.5 KG
 AVG BCA: M215(+37) F260(+73) P227(+44)
 2 Superior Lactations
 Progeny Data: 5EX 8VG 3GP 0G 0F
 15 DAUS ME AVG: 11219 413 3.7 359 3.2
 AVG BCA: M212 F212 P217

Sale of Stars

Managed by
GLJ Inc